

Instructions for Workshop Leader

Use these slides (in order) with the sections of your session outline.

Welcome and Overview (Slides 2-4)

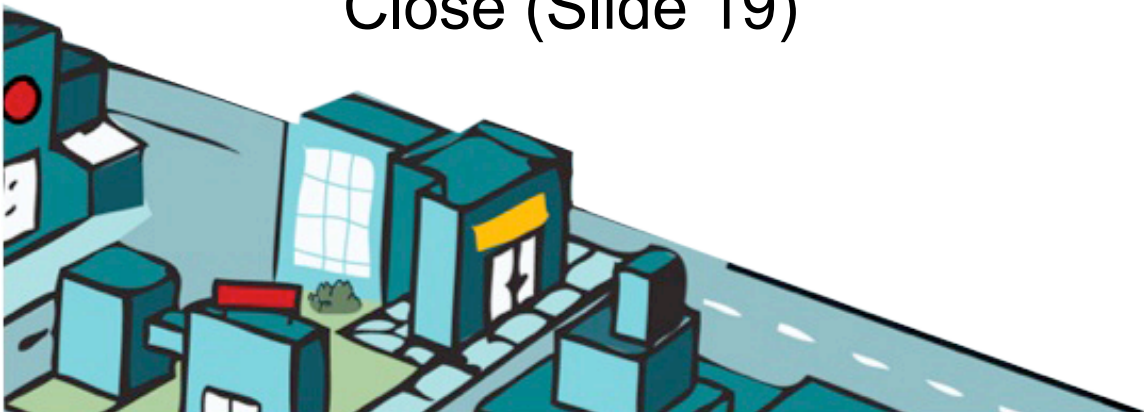
Activity (Slides 5-6)

Present (Slides 7-11)

Discuss (Slide 12)

Review and Evaluate (Slides 13-18)

Close (Slide 19)





Earn Well

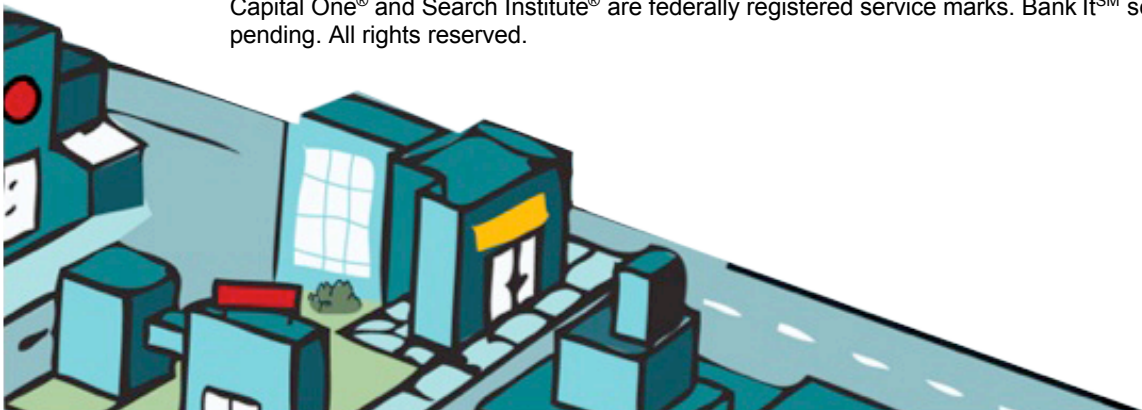
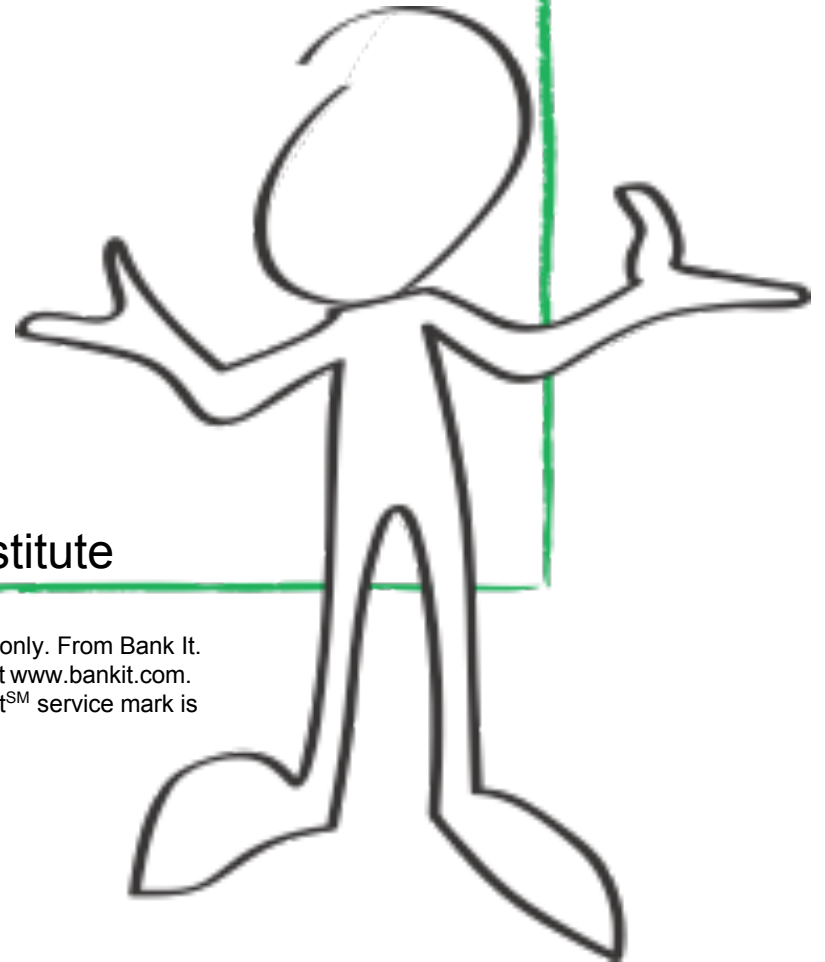
Welcome to Bank It

Exploring Work That Fits You

2-EA-T

Sponsored by Capital One and Search Institute

Permission to photocopy this handout granted for individual and educational use only. From Bank It. Copyright © 2010 by Capital One and Search Institute. For more information, visit www.bankit.com. Capital One® and Search Institute® are federally registered service marks. Bank ItSM service mark is pending. All rights reserved.



Welcome and Overview

What is Bank It?

Bank It delivers real-world topics and tools to help you:

- Understand,
- Talk about, and
- Manage your money.

From Capital One and Search Institute



2-EA-T



Welcome and Overview

Three goals for today:

1. Identify what a career is.
2. Describe what affects a person's career and job choices.
3. Explain how education can affect lifetime income.



2-EA-T



Activity

A career is a job where we find meaning and purpose.



2-EA-T



Activity

Yes, It's Me. No, It's Not.

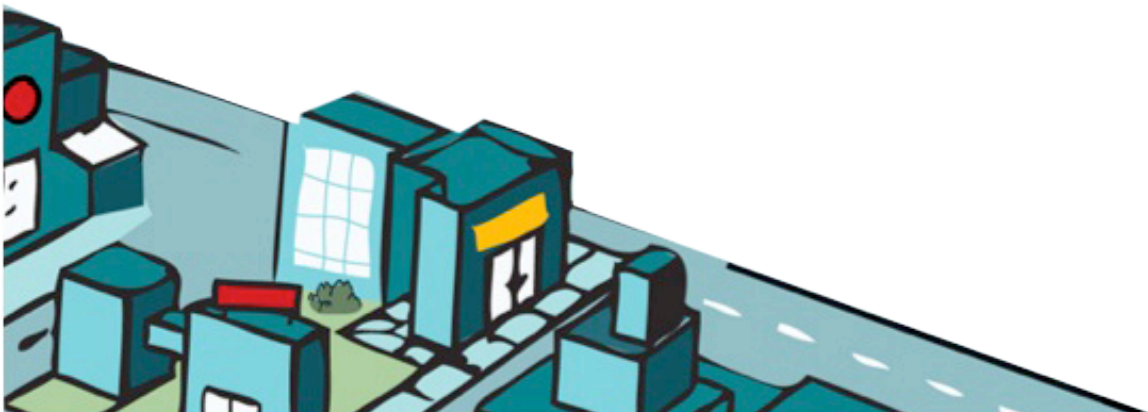


2-EA-T



Present

What affects your career
and job choices?



2-EA-T



Present

A spark is an interest you have. It's something you really enjoy doing and want to learn more about. See the list of sparks at www.ignitesparks.org.

Source: Search Institute



2-EA-T



Present

How does education
affect lifetime income?



2-EA-T



Present

What is a positive job reference?



2-EA-T



Present

Who could provide a positive job reference for you?



2-EA-T



Discuss

Turn to talk to someone near you.

1. Say your first name.
2. How could your interests help you find a career you enjoy?



2-EA-T



Review and Evaluate

What is a career?

A career is a job where we find meaning and purpose.



2-EA-T



Review and Evaluate

What is the difference between a career and a job?

- The main focus of a job is to earn money.
- The main focus of a career is to contribute and do something meaningful while also earning money.



2-EA-T



Review and Evaluate

What affects a person's career and job choices?

1. Your interests
2. Your education
3. Your skills



Review and Evaluate

How can education affect lifetime income?

The more education you get, the more money you tend to earn.



2-EA-T



Review and Evaluate

What is a positive job reference?

A positive job reference is someone who can talk about your strengths as a person and as a worker.



2-EA-T



Review and Evaluate

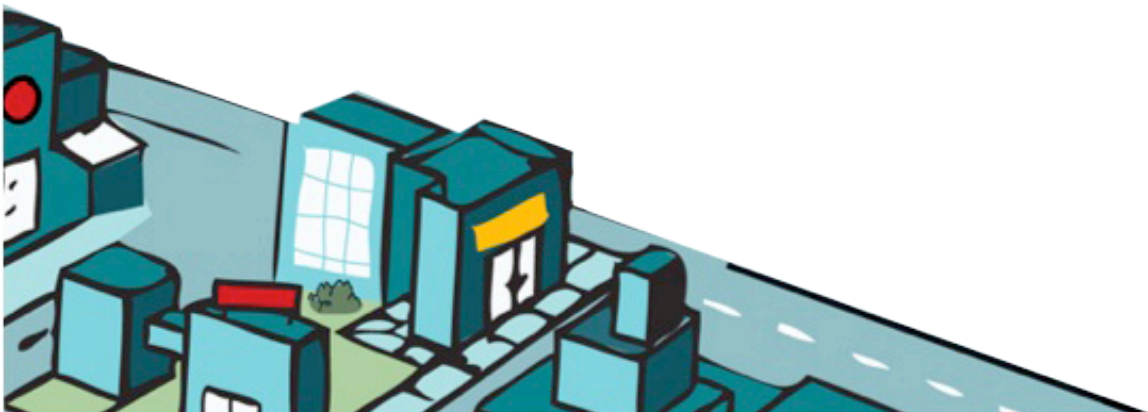
Who could provide a positive job reference?

- A former boss
- A co-worker
- A teacher
- A coach
- Someone you've volunteered for



Close

What is the best career for you?



2-EA-T

